



Wichita
Children's Theatre
& Dance Center

2016-2017

DIRECTOR'S MESSAGE

Welcome to our 2016-17 season! Last year was another rewarding year of bringing theatre, music and dance to the children of Wichita and the surrounding areas.

We are very excited about our upcoming season. We have some brand new productions planned along with some well-loved classics. We are also extremely pleased with how well our satellite studio is doing in El Dorado. It continues to grow and we envision only greater things in the future.

We are excited to announce that we will again be partnering with Mark Arts, formerly Wichita Center for the Arts, 9112 E. Central, to bring exciting theatre plus art classes to the East Side Community of Wichita. We began an outreach program last year taking dance classes to pre-schools in the community. This year we will expand the program to include Jacob's Learning Ladder at Grace Presbyterian Church, East Heights United Methodist Preschool, and Primrose School of Wichita East. Our classes continue to target pre-school children through high school students. Check pages 9 & 10 for details.

Please plan to join us for **TRICK OR TREAT STREET**, a Family Fall Festival and major fundraising event for the Wichita Children's Theatre & Dance Center, October 29th. (See page 4 for more details)

We continue to be amazed by the young people who walk through our doors and the outstanding adults they become. They are using their talents and gifts all over the country and we are proud to have had a part in their lives.

Monica Flynn, Executive Director

Visit our website: www.wctdc.com

A NOTE ABOUT WCT&DC TICKET PRICES

Individual tickets are \$7.00 each. Discounts are available for groups of 10 or more at \$6.00 per ticket. In order to receive the group rate, one person or organization must be responsible for a single payment. School group tickets will be \$5.00 per person. For lunch or dinner performances, regular admission tickets are \$8.50 per person (includes pizza and beverage) and group discount tickets are \$7.50. Show only tickets may be purchased for all pizza performances.

Notice the advantages of purchasing a season punchcard outlined in the order form on page 14.

MAIN STAGE SERIES

MADAGASCAR – A MUSICAL ADVENTURE (A Musical)

Performed at The Wichita Children's Theatre & Dance Center, 201 Lulu
Recommended for ages 5 & up (for reservations, call **262-2282**)

October 7, Friday – 10:00, 1:00, (schools) & 7:00

October 8, Saturday – 2:00



Join Alex the Lion, Marty the Zebra, Melman the Giraffe, Gloria the hip hip Hippo and of course, those hilarious, plotting penguins as they bound onto your stage in the musical adventure of a lifetime. Based on the smash DreamWorks animated motion picture, Madagascar – A Musical Adventure follows all of your favorite crack-a-lackin' friends as they escape from their home in New York's Central Park Zoo and find themselves on an unexpected journey to the madcap world of King Julien's Madagascar.

(Performed by special arrangement with Music Theatre International)

THE BEST CHRISTMAS PAGEANT EVER

Performed at Mark Arts, formerly Wichita Center for the Arts, 9112 E. Central
Recommended for ages 5 & up (for reservations, call **262-2282**)

- Dec. 6, Tuesday – 10:00 & 1:00 (schools)
- Dec. 7, Wednesday – 10:00 & 1:00 (schools)
- Dec. 8, Thursday – 10:00 & 1:00 (schools)
- Dec. 9, Friday – 10:00 & 1:00 (schools) & 6:30
- Dec. 10, Saturday – 1:00 & 3:00
- Dec. 11, Sunday – 2:00

A very funny and memorable story that introduces an outrageous family of children who learn the Christmas story and help everyone to rediscover its true meaning. This is an annual holiday tradition you won't want to miss

(Produced by special arrangement with Samuel French, Inc.)

This show is sponsored by **The Irene Vickers Baker Trust**



YOU'RE A GOOD MAN CHARLIE BROWN (A Musical)

Performed at Mark Arts, formerly Wichita Center for the Arts, 9112 E. Central

Recommended for ages 5 & up (for reservations, call **262-2282**)

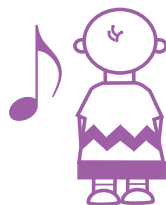
March 31, Friday – 10:00 & 1:00 (schools) & 7:00

April 1, Saturday – 7:00

Don't miss this classic musical based on the characters from

Charles M. Schulz's comic strip Peanuts.

(Produced by special arrangement with Tams-Witmark Music Library, Inc.)



DANCE SERIES

MISTLETOES

A Christmas Dance Concert (Intermediate I and above)

Performed at Wichita Children's Theatre

& Dance Center, 201 Lulu

December 15, Thursday 6:30 p.m.

LITTLE MERMAID

(Kinderdance, Pre-Ballet/Tap, Primary, Stage Dance I, and Int. Rep.)

Performed at Wichita Children's Theatre

& Dance Center, 201 Lulu

(for reservations, call **262-2282**)

April 28, Friday 7:00 p.m.

April 29, Saturday 2:00 & 7:00 p.m.

April 30, Sunday 2:00 p.m.

FINDING NEVERLAND

(Ballet I, Ballet II thru Adv. Ballet, Stage Dance II & Upper Level Stage Dance classes, Int. Tap & Jazz I thru Adv., Supplemental Ballet Classes, & Repertoire)

Performance location Mark Arts, formerly
Wichita Center for the Arts, 9112 E. Central

(for reservations, call 262-2282)

June 2, Friday 7:00 p.m.

June 3, Saturday 7:00 p.m.

June 4, Sunday 2:00 p.m.

HEATHER MULLER BLACK BOX THEATRE SERIES

Performed in the Heather Muller Black Box Theatre at The Wichita Children's Theatre, 201 Lulu, on the 2nd floor. Regular Ticket prices for the Black Box are \$9.00 and Premium Tickets are \$13.00. Ticket Prices for LITTLE WOMEN (a fundraiser) are \$25 and \$15 for CAN YOU HEAR THE PEOPLE SING, the night of the auction.

THE 25TH ANNUAL PUTNAM COUNTY SPELLING BEE (A Musical) (Produced by special arrangement with Music Theatre International)

*(A musical comedy that centers on a fictional spelling bee set in a
geographically ambiguous Putnam County Middle School.*

Six quirky adolescents compete in the bee run by three equally quirky adults.)

Nov. 18, Friday

7:00 p.m.

Nov. 19, Saturday

2:00 p.m. & 7:00 p.m.

Nov. 20, Sunday

2:00 p.m.

LITTLE WOMEN (A Musical) (A revival of the 2013 production) (Produced by special arrangement with Music Theatre International)

*This is a fundraiser for the
Heather Muller Black Box Theatre &
Performances will be at Roxy's Downtown,
412 ½ E. Douglas.*

January 6, Friday 8:00 p.m.

January 7, Saturday 8:00 p.m.



CAN YOU HEAR THE PEOPLE SING

*(An original Broadway review
with hits from yesterday and today)*

July 27, Thursday 7:00 p.m.

July 28, Friday 7:00 p.m.

July 29, Saturday 8:30 p.m.*

July 30, Sunday 2:00 p.m. **(Following Auction)*

*All Reservations for Heather Muller Black Box Productions
including LITTLE WOMEN should be made at **262-2282**.*

ONCE UPON A TIME SERIES

Performed at Wichita Children's Theatre & Dance Center, 201 Lulu

This series offers participatory theatre for the 2- to 8-year old, performed by our adult professional acting company. Seating is on the floor where the actors can easily interact with the audience. We invite you to bring your children 15 minutes before show time for the weekend performances and join us in making a craft relating to the theme of the show. Note: We have weekday lunch matinees.

P.J. Performance – For a change of pace, dress your little ones in their p.j.'s and come snuggle up with us for a special good night performance.

The pizza performances are sponsored by



Show only-\$7.00
Pizza & Show-\$8.50

PERFORMANCE DAYS & TIMES:

Wednesdays – Noon Performance (Pizza served at 11:30 a.m.)

Thursdays – 10:00 a.m. Performance
Noon Performance (Pizza served at 11:30 a.m.)

Fridays - 10:00 a.m. Performance
Noon Performance (Pizza served at 11:30 a.m.)
6:30 p.m. Performance (Pizza served at 6:00 p.m.)

Saturdays – Noon – Performance (Pizza served at 11:30 a.m.)

*Denotes extra performance days and times!

ALICE IN WONDERLAND – October 12 - 15

Alice gets bored by the lessons her sister is teaching her, so she follows a White Rabbit down its hole. From then on, it's not a typical day for Alice! This adaptation is very true to the original story.

JUNIE B. IN JINGLE BELLS, BATMAN SMELLS! – Nov. 30 - Dec. 3 & 16 – 17

*Dec. 16, Friday - 6:30 – Performance (Pizza served at 6:00 p.m.)

*Dec. 17, Saturday - Noon – Performance (Pizza served at 11:30 a.m.)

Ho, ho...uh-oh! It's holiday time in Classroom One as this delightful and well-loved children's book comes to the stage and Junie B. is a mix of emotions. How can Junie B. enjoy the festivities when Tattletale May keeps ruining her holiday glee? And the worst part is when the class picks names for Secret Santa, Junie B. gets stuck with Tattletale you-know-who! It's enough to fizzle your holiday spirit or is it? Maybe a Secret Santa gift is the perfect opportunity to give May exactly what she deserves. **Running time for this show will be approximately 40 minutes.**

(Produced by special arrangement with Playscripts Inc.)

GOLDILOCKS AND THE THREE BEARS – January 25 - 28

Poor Goldilocks can't seem to do anything right. When she gets lost and stumbles into the warm cottage of the Three Bears, she soon wreaks havoc there, and the fun really begins when the family arrives home. Who is more surprised - Goldilocks or the Bears?

THE STINKY CHEESE MAN – March 1 - 4

The Stinky Cheese Man is a whirlwind of whacky, whimsical wisecrackers! An array of the usual fairy tale suspects pal up to produce preposterous vignettes such as "Cinderumplestiltskin or The Girl Who Really Blew It," "The Other Frog Prince" "The REALLY Ugly Duckling," and the malodorous "Stinky Cheese Man."

Running time for this show will be approximately 40 minutes.

(Produced by special arrangement with Playscripts Inc.)

THE THREE BILLY GOATS GRUFF – April 5 - 8

*Special Little Lambs Pre-school Performances on the 26th at 10:00 a.m. at 8000 W. 21st .

All the three billy goats want to do is get across the bridge so they can eat the grass on the other side, but there's a problem. There's a grumbly, grouchy, bully of a troll under the bridge who is determined not to let them pass. They do finally get across, but only after some quick thinking – and they make a new friend in the process.

All Once Upon A Time Productions with the exception of JUNIE B. IN JINGLE BELLS, BATMAN SMELLS! & THE STINKY CHEESE MAN are produced by special arrangement with KMR Scripts



PICNIC THEATRE SERIES

(These shows are performed at the Wichita Children's Theatre & Dance Center, 201 Lulu)

THE UGLY DUCKLING – June 15-23 **THE LITTLE RED HEN** – July 13-21

The Picnic Theatre series
is produced by special arrangement with
kmrscripts.com



SPECIAL EVENTS

TRICK OR TREAT STREET

TRICK-OR-TREAT STREET returns as a Family Fall Festival, a new & improved event. This major fundraiser will include trick-or-treating, performances, games and family fun for all ages! Have lunch or dinner with us from 11:00 to 7:00. This event will have many sponsorship opportunities!

October 29, Saturday – 10:00 a.m. - 7:00 p.m.
at Wichita Children's Theatre & Dance Center, 201 Lulu

Call 262-2282 for reservations and/or sponsorship opportunities.



WICHITA RIVER FESTIVAL

THE THREE BILLY GOATS GRUFF (A Musical Adaptation by Kevin M. Reese)
(A Wichita River Festival Event)

Performed at Century II, Mary Jane Teall Theatre
Recommended for all ages

June 6, Tuesday – 11:00, 12:30, & 2:00
June 7, Wednesday – 11:00, 12:30, & 2:00



All the three billy goats want to do is get across the bridge so they can eat the grass on the other side, but there's a problem. There's a grumbly, grouchy, bully of a troll under the bridge who is determined not to let them pass. They do finally get across, but only after some quick thinking – and they make a new friend in the process.

BIRTHDAY CELEBRATIONS

Celebrate your birthday at the Wichita Children's Theatre & Dance Center in conjunction with our Once Upon a Time Series. Our party package will include a party based on the theme of the Once Upon A Time show being presented at that time. For possible birthday party bookings apart from show dates please call the office and ask for Sarah. Please call us at 262-2282 for details

ALL WCT & DC programs are made possible in part by



AUDITIONS

Auditions will be held at Wichita Children's Theatre & Dance Center, 201 Lulu

MADAGASCAR – A MUSICAL ADVENTURE (A Musical)

Ages 9 & Up
Tuesday, August 30
5:00 p.m.

THE 25TH ANNUAL PUTNUM COUNTY SPELLING BEE (A Musical Comedy)

(Heather Muller Black Box Theatre Production)

Ages 12 & up
Tuesday, August 30
6:30 p.m.

(Please bring a prepared musical piece with sheet music)

THE BEST CHRISTMAS PAGEANT EVER

Ages 8 & up (adults needed)

Tuesday, November 1

A-L5:00

M-Z6:00

Callbacks – Wednesday, November 2, 5:00 p.m.

YOU'RE A GOOD MAN CHARLIE BROWN (A Musical)

Ages 10 & up
Tuesday, February 7
5:00 p.m.

CAN YOU HEAR THE PEOPLE SING

(An original Broadway Review)

(Heather Muller Black Box Theatre Production)

Ages 12 & up
Monday, June 5
5:00 p.m.

(Please bring a prepared musical piece with sheet music)

***This show will be rehearsed during a shortened but intensified rehearsal period from July 10-July 26.**



ADMINISTRATIVE STAFF

Executive Director	Monica Flynn
Assistant Executive Director, Producing Director	Kelly Wonsetler Heather Muller Black Box Theatre & Director of WCT&DC of El Dorado
Tour Director	Kyle Vespestad
Director & Coordinator of Theatre Division	Kelly Wonsetler
Director of Dance Division	Kris Anderson
Dance Coordinator	Stephanie Boyle

WCT GLEE

“YOUNG AT HEART” Ages 55 & up

Director: Kyle Vespestad
Mondays 6:00 –7:30 p.m.

“Young at Heart” is a group of ladies that come together once a week for the joy of singing and spreading this joy to others.

All who are interested in participating in Young At Heart, please attend the initial meeting Monday, September 12.

Call 262-2282 for more information.

No Audition Required! Enroll now!

Because you're never too old to sing this glee club will be performing a wide range of music from both today and yesterday. Come ready to have a blast with this great group of ladies.

TEACHING STAFF

KRISTINE ANDERSON moved to Wichita from Minneapolis, Minnesota where she directed a Youth Ballet Company. Her choreographic credits include Nutcracker, Coppelia, and Sleeping Beauty, among others. She has a BFA in ballet from the University of Utah and has performed with the Brelsfoard Dance Theatre Co. in Chicago, Arizona Ballet Theatre, and Minnesota Dance Theatre.

STEPHANIE BOYLE has a BA in Art History from Washburn University. Originally from Concord, MA, she studied and taught dance with the West Concord Dance Academy for 11 years. While teaching first and second grade at an International School in Cascais, Portugal, she performed with the Portuguese International Dance Academy.

KERI BYE graduated from Friends University with a degree in Music Education in 2008. She has taught music in the Wichita Public Schools for the last seven years at both the elementary and middle school level. Keri also has experience teaching drama classes and vocal classes for camps. Performing in plays, musicals, and choirs has been a passion of Keri's for many years; including performing at WCT&DC through middle and high school. She is excited to join the Wichita Children's Theatre staff.

TIFFANIE CAIN grew up performing with WCT&DC. She earned her BSE in Speech and Drama Education from Oklahoma Baptist University and has taught for 9 years now. She began teaching for WCT&DC in the summer of 2015.

DENISE CELESTIN, Professor of Dance at Wichita State University, received her early training in New Orleans and completed the MFA in Ballet from the Texas Christian University. She performed with the New Orleans Ballet, Fort Worth Ballet, Fort Worth Opera, and Ballet Met of Columbus, Ohio and served on the faculties of the Ballet Met Academy, Otterbein College, and the Ohio State University. Ms. Celestin participated as a coach in the USA International Ballet Competition in Jackson, Mississippi, and has choreographed a wide range of works for ballet and opera. Her choreography has been presented throughout Europe and parts of Asia. She has received numerous awards including an Individual Artist Fellowship Award for Choreography from the Kansas Arts Commission in 2001, the Mortar Board Educator's Appreciation Award, and the WSU President's Award for Distinguished Service in 2005. She is also a Dorothy Johansen Hauck Faculty Fellow in Dance. Ms. Celestin has studied teaching methods at Canada's National Ballet School Teacher's Seminars in Toronto, Canada, and at the International Vaganova Method Conference/Demonstration in St. Petersburg, Russia.

RESA-MARIE DAVENPORT earned her BFA in Dance Performance and Choreography at Wichita State University. While attending WSU, she was a member of the Wichita Contemporary Dance Theatre. With the company, she performed locally as well as in Italy and Mexico. Resa-Marie is currently in her final year in the Early Childhood Unified program at Wichita State University. She began her dance training with WCT&DC at the age of four.

KAYLEE DONOHUE began dancing at the age of four. She began training at Wichita Children's Theatre and Dance Center in 2008, where she became a member of our Repertoire Company in 2010. She was also a teacher's assistant for six years of her training. She has danced with Ballet Wichita in many productions including The Nutcracker where she performed as a Dream scene mouse, Chinese soloist, and orchid. Kaylee joined her high school's dance team and was recognized as an All-American Dancer and attended American Ballet Theatre's Summer Intensive at the University of Alabama, while in high school. Kaylee attends Wichita State University pursuing a Bachelor's of Science in Nursing as well as a minor in dance.

MAKAYLA EVANS began studying dance at the age of three and studied with WCT&DC for ten years. She graduated from Butler Community College and received an Associates of Arts in Dance. She was on the Butler Dance Team and was asked to choreograph for the team as well. She also received a dance scholarship to BCC. She has danced in Ballet Wichita's The Nutcracker and Ballet in the Park for the past eleven years performing numerous roles in each. She is attending WSU pursuing a major in Dance. She is very excited to begin her fourth year of teaching for the studio she grew up in.

KATIE HARMON is a graduate of Friends University where she double majored in Musical Theatre and Math Education. While attending Friends, she was also a member of the Singing Quakers. Katie has been performing since 1990. In the past, she has performed for Mark Arts, formerly Wichita Center for the Arts and the Once Upon A Time Players at WCT&DC. She is currently a teacher for USD 259.

BLAIR HANNING began studying dance at the age of 4. She graduated with a Bachelor of Arts: Concentration in Dance from Colorado State University. While attending CSU, Blair studied

TEACHING STAFF

Vagonava Ballet, Limon-based Modern Technique, and Jazz Techniques, as well as Modern Choreography and Ballet Pedagogy. After graduation she studied with 3rd Law Dance Company in Boulder, CO and managed Suzanne's School of Dance in College Station, TX. She is currently the Dance Coach for Collegiate High School.

JOICE HENRY has a Bachelor of Fine Arts in Dance Performance from SUNY at Buffalo. She also received her certification from Dance Master's of America "Teacher's Training School" to teach in all disciplines. Past performance credits include "Swing!", "Steel Pier", "Walt Disney World", Sesame Street Live's "Elmo's Coloring Book" National Tour, and Broadway's "Evita" North American Tour to name a few. Joice was hired by USD 259 to establish a dance program at Brooks Middle School, where she taught full time for 2 years. She is pleased to continue working with young people and sharing her experiences in dance and theatre with them in classes and shows as well.

DENISE JACKSON-SIMON has a BS in education from KSU and has done graduate work at WSU. She recently retired from teaching drama at Buckner Performing Arts Magnet from its inception in 1991. Much of her work in theatre has been performing original pieces on issues relating to health, education, and women. She has also designed and implemented Fine Arts and Prevention workshops for youth.

BRENDA LAWTON earned her undergraduate degree in theatre and music from Northwestern University and an MFA in theatre arts from the University of Iowa. She has 19 years experience teaching children's theatre. Before joining the faculty of WCT&DC in 1998, she taught at the Children's Theatre of Western Springs in the Chicago area, working with students to create original dramas. During the summer of 2014, she taught theatre classes to children in Kenya. She has also performed at theatres in Chicago, Iowa, and Kansas. For the past five seasons, Brenda has performed with the Wichita Grand Opera.

JULIE SHARP earned her Associate in Fine Arts Degree at Butler Community College. Originally from Illinois, she began dancing at age three, discovered her love of performance through her Jr. & Sr. High Show Choir competitions, and found her first theatre experience as "happy" in Snow White and the Seven Dwarfs! In 2002, Julie joined the WCT&DC family, teaching dance and theatre classes. She currently plays French horn for her church orchestra and loves to choreograph for local children's musicals. She is honored to share the joy of performance with all of her students!

MICHELLE VARDAMAN earned a Bachelor of Arts in Music with an emphasis in opera and a minor in piano pedagogy and accompaniment from Wichita State University. She then received certification for Italian and Opera History from The Istituto Europeo in Florence, Italy. She received her Masters in Vocal Education from WSU in December of 2012. She opened Michelle's Music Studio in 1996 and has been teaching piano, voice, and theatrical coaching ever since. She has performed with Opera Kansas, Cowtown Empire House, Scottish Rite Signature Theatre, and WSU Opera Theatre.

SARAH WALDEN earned her Bachelor of Performing Arts in Dance from Wichita State University. During her studies at WSU she toured and performed around the United States. She's taught dance for over thirteen years, including six years as the only elementary school dance teacher in the state of Kansas at Buckner Performing Arts & Science Magnet. She still enjoys performing as a soloist with Ballet Wichita. Sarah has dedicated her professional career to supporting the arts in Kansas schools.

GABRIELLE WIENS is attending Wichita State University majoring in Music Education. Gabrielle has sixteen years of dance training with fourteen of those being with the Wichita Children's Theatre & Dance Center. She was a teacher's assistant for eight years. She will continue her dance training at Wichita State. She was also honored to dance in Ballet Wichita's production of The Nutcracker for eight years. She will be teaching again this year at our Wichita and El Dorado locations.

GRACE WIENS is attending Wichita State University majoring in Early Childhood Education with a minor in Dance. She trained at WCT&DC for fifteen years during which she was a teacher's assistant for eight years. Grace will be teaching at our El Dorado Studio.

MADDY THIESSEN studied dance at WCT&DC for 15 years, beginning at the age of three. In recent years she has studied at Ballet Magnificat! in Jackson, Mississippi, Kansas City Ballet, and The Kirov Ballet in Washington D.C. She also spent a year of study at The Joffrey Ballet School in NYC. Maddy began teaching at WCT&DC of El Dorado in the fall of 2014 as the lead dance teacher there but also continued to teach at the Wichita location. She has been teaching dance for the last 10 years.

SHANNON SCHOOL OF PERFORMING ARTS

THEATRE

Fall Session begins September 12 and ends November 12

Fairy Tale Theatre & Dance Combo begins September 3 and ends Dec. 10.

Winter Session begins January 9 and ends March 11

Fairy Tale Theatre & Dance Combo begins the week of January 2 and ends May 20.

**ALL CLASSES WILL BE HELD AT 201 LULU, WICHITA, WICHITA, 2112 E. CENTRAL, Wichita,
OR 149 N. MAIN, EL DORADO.**

FAIRY TALE THEATRE & DANCE COMBO

AGES: 4-5

INSTRUCTORS:

Gabi Wiens & Stephanie Boyle

Saturday 9:30 - 11:00

45 minutes of drama, music, poetry, and movement all based on a storybook theme for the day followed by 45 minutes of pre-ballet & tap.

COST: \$125.00 per session

CREATIVE DRAMATICS/THE BUILDING BLOCKS OF DRAMA (Fall Only)

AGES: 6-8

INSTRUCTOR:

Brenda Lawton

Tuesday 5:30 - 6:30

This class will use a mixture of pantomime, poetry, story dramatization, singing, and movement to stimulate creativity and self-expression.

Students will learn about the building blocks of drama: Who, What, Where, Why, Conflict and Resolution as we dramatize fun stories and construct a strong foundation of theatre skills in preparation for Basic Acting.

COST: \$85.00 per session

CREATIVE DRAMATICS THROUGH THE HOLIDAYS (Winter Only)

AGES: 6-8

INSTRUCTOR:

Brenda Lawton

Tuesday 5:30 - 6:30

This class will use a mixture of pantomime, poetry, story dramatization, singing, and movement to stimulate creativity and self-expression.

Each class will be centered around a winter holiday for example, the Chinese New Year, Ground Hog Day, Valentine's Day, President's Day, and St. Patrick's Day. Students will learn about traditions and dramatize stories about these holidays as they learn theatre skills in preparation for Basic Acting.

COST: \$85.00 per session

ACTING

BASIC ACTING

AGES: 9-12

INSTRUCTOR:

Katie Harmon

Saturday 12:00 - 1:00 (Fall Only)

Katie Harmon

Saturday 1:00 - 12:00 (Winter Only)

An introduction to basic skills in acting such as vocal projection, stage movement, and character development. This is a nine-week course.

COST: \$85.00 per session

PERFORMANCE

ELFLANDIA (A Christmas Musical)

(Fall Only) (Class will run from Oct. 3 - Dec. 6)

AGES: 7-9

INSTRUCTOR:

Denise Jackson-Simon

Monday 4:30 - 6:00

A "short" musical about a land of big dreams and curly toes! Discover what the elves learn about grumpy, stressed humans during the holiday season. With such catchy tunes as "Elfie Selfie", "Elflandia", & "Silly Humans".

This class will perform before our production of JUNIE B. IN JINGLE BELLS, BATMAN SMELLS! on Friday evening, Dec. 5 and Saturday lunch, Dec. 6.

COST: \$125.00 per session

COLORS (A Musical)

(Winter Only)

AGES: 6-8

INSTRUCTOR:

Tiffanie Cain

Monday 5:30 - 7:00

A musical which uses the universal appeal of the crayon box as a basis for teaching children some valuable lessons about human relationships. This production will be performed at WCT&DC, 201 Lulu, on Monday, November 7th.

COST: \$125.00 per session



Drama

SPECIALTY

FROM PAGE TO STAGE (Fall Only)

AGES: 9-12

INSTRUCTOR:

Brenda Lawton Tuesday 6:30 - 8:00

Students will choose a book and create a theatrical production based on the story.

Students will be involved in creating the set and costumes and will perform their production for family and friends at the end of the nine weeks.

COST: \$125.00 per session

WCT CHILDREN'S CHOIR

(enrollment is for both fall & winter sessions)

AGES: 10 & up

INSTRUCTOR:

Keri Bye Saturday 11:00 - 12:00

This class will teach correct vocal technique as well as choral arrangements of music for young people. This class will be a two session class meeting nine weeks in the fall and nine weeks in the winter. Upon conclusion of the winter classes, this group will be asked to sing in the Spring at various venues around Wichita with our Young at Heart Glee Club.

COST: \$85.00 per session (payment can be paid in the fall and again in the winter)

MARK ARTS, FORMERLY WICHITA CENTER FOR THE ARTS

9112 E. Central

THEATRE & ART CLASSES

Fall Session begins September 17 and ends November 12

Winter Session begins January 14 and ends March 11

To enroll for classes at Mark Arts, formerly Wichita Center for the Arts go to wctdc.com

FAIRY TALE THEATRE PLUS ART

AGES: 4-5

INSTRUCTOR:

Katie Harmon Saturday 9:30 - 11:00

(Mark Arts location)

45 minutes of drama, music, poetry, and movement followed by 45 minutes of art all based on a storybook theme for the day. Art will be taught by an art instructor at Mark Arts, formerly Wichita Center for the Arts.

COST: \$125.00 per session

Each class will be centered around a winter holiday for example, the Chinese New Year, Ground Hog Day, Valentine's Day, President's Day, and St. Patrick's Day. Each Creative Course is designed to prepare the student for basic acting. There will be 45 minutes of Creative Dramatics followed by 45 minutes of Art taught by an art teacher from Mark Arts, formerly Wichita Center for the Arts.

COST: \$125.00 per session

CREATIVE DRAMATICS PLUS ART (Fall Only)

AGES: 6-8

INSTRUCTOR:

Katie Harmon Saturday 10:30 - 12:00

(Mark Arts location)

This class is a mixture of pantomime, poetry, story dramatization, singing, and movement to stimulate creativity and self-expression. There will be 45 minutes of Creative Dramatics followed by 45 minutes of Art taught by an art teacher from Mark Arts, formerly Wichita Center for the Arts.

COST: \$125.00 per session

GALLERY ALIVE! (Winter Only)

AGES: 9-12

INSTRUCTOR:

Brenda Lawton Saturday 10:30 - 12:30

(Mark Arts location)

During half of the class, students will learn the principles of Basic Acting and create scenes based on works of art. The students will also create the sets, props, and costumes for their scenes which will be shared in a Living Gallery at the end of the nine weeks. The other half of the class will be spent with an art teacher from Mark Arts, formerly Wichita Center for the Arts where students will study the historical importance of the works of art around which their scenes are being created. Students will also create their own art each week.

COST: \$125.00 per session

CREATIVE DRAMATICS THROUGH THE HOLIDAYS PLUS ART (Winter Only)

AGES: 6-8

INSTRUCTOR:

Brenda Lawton Saturday 9:30 - 11:00

(Mark Arts location)

This class will use a mixture of pantomime, poetry, story dramatization, singing, and movement to stimulate creativity and self-expression.

**MARK
ARTS**



DANCE

Fall semester classes will begin Monday, August 29 and end Wednesday, Dec. 14.
(Mistletoes, our Christmas Dance Showcase for our older dancers
will be held on Thursday, Dec. 15 at 6:30 p.m.)

Winter semester classes will begin Tuesday, January 2 and end Thursday, May 25.

Any class with less than 6 students will be canceled.

ALL CLASSES WILL BE HELD AT 201 LULU

PRE-SCHOOL DIVISION Combination of ballet, tap, and creative movement.

TINY TOTS MOVEMENT & MUSIC

(A parent & child interactive class)

AGE: 2-3 (Must be accompanied by a parent or caregiver)

No dance attire required!

INSTRUCTOR:

Kris Anderson Saturday 9:00 - 9:45

This class will NOT perform in the recital but will have an informance during the final class May 20.

KINDERDANCE

AGE: 3 years through Kindergarten

INSTRUCTOR:

Kris Anderson Wednesday 5:00 - 5:45

(All students must be 3 by September 1 and potty trained.)

PRE-BALLET/TAP I/II

AGE: 4 & 5 year olds

INSTRUCTOR:

Makayla Evans Monday 5:00 - 5:45

Staff Friday 5:15 - 6:00

(All students must be 4 by September 1.)

PRE-BALLET/TAP II

AGE: 5 years through Kindergarten

INSTRUCTOR:

Gabrielle Wiens Tuesday 5:00 - 5:45

(All students must be 5 by September 1.)

PRE-BALLET/TAP I/II & FAIRY TALE THEATRE COMBO

AGE: 3½ - 5

INSTRUCTORS:

Stephanie Boyle & Saturday 9:30 - 11:00

Gabrielle Wiens

(All students must be potty trained.)

ACADEMIC BALLET DIVISION

Classes will include an introduction to basic ballet positions, steps, technique, proper placement and body alignment at both the barre and centre.

PRIMARY

AGE: 1st & 2nd Grade or 6 or 7 by September 1

INSTRUCTORS:

Gabrielle Wiens Tuesday 5:45 - 6:45

Stephanie Boyle Thursday 5:45 - 6:45

Resa-Marie Davenport Friday 5:45 - 6:45

BALLET I

AGE: 3rd Grade & Above

INSTRUCTORS:

Sarah Walden Monday 6:45 - 7:45

Staff Wednesday 5:45 - 6:45

Resa-Marie Davenport Friday 5:45 - 6:45

ELEMENTARY BALLET DIVISION

Two classes per week are required for this division.

BALLET II

INSTRUCTORS:

Kris Anderson Wednesday 5:45 - 6:45

Resa-Marie Davenport Friday 6:45 - 7:45

Resa-Marie Davenport Saturday 9:45 - 10:45

Prerequisite: Instructor's consent

All Ballet III students are strongly encouraged to attend Ballet III three times a week in preparation for pointe

BALLET III

INSTRUCTORS:

Kris Anderson Tuesday 5:45 - 7:00 &

Kris Anderson Wednesday 5:45 - 6:45

Resa-Marie Davenport Friday 6:45 - 7:45

Resa-Marie Davenport Saturday 9:45 - 10:45

Prerequisite: Instructor's consent

INTERMEDIATE/ADVANCED BALLET DIVISION

(Placement for all Intermediate Level Classes by instructor's consent or audition only)

These students will progress to more advanced technique, building stamina, strength, self-discipline, artistic style, and performance skills.

Three Ballet classes per week are required for Intermediate I and II. Three Ballet classes per week are recommended for Intermediate III & above.

INTERMEDIATE I BALLET

INSTRUCTOR:

Kris Anderson Tuesday 5:45 - 7:00 &

Kris Anderson Saturday 9:30 - 10:45

INTERMEDIATE II BALLET

INSTRUCTORS:

Sarah Walden Monday 5:30 - 6:45

Kris Anderson Saturday 9:30 - 10:45

INTERMEDIATE III BALLET

INSTRUCTORS:

Sarah Walden Monday 5:30 - 6:45

Kris Anderson Tuesday 7:00 - 8:15

Kris Anderson Saturday 10:45 - 12:00

INTERMEDIATE IV/ADVANCED BALLET

INSTRUCTORS:

Denise Celestin	Monday	6:45 - 8:15
Kris Anderson	Tuesday	7:00 - 8:15
Kris Anderson	Saturday	10:45 - 12:00

INTERMEDIATE I/II POINTE & PRE-POINTE

INSTRUCTOR:

Kris Anderson	Thursday	6:45 - 8:00
---------------	----------	-------------

Prerequisite: Instructor's consent

INTERMEDIATE III/ IV POINTE

INSTRUCTOR:

Kris Anderson	Thursday	5:30 - 6:45
---------------	----------	-------------

Prerequisite: Instructor's consent

INTERMEDIATE IV/ADVANCED POINTE

INSTRUCTOR:

Kris Anderson	Wednesday	7:00 - 8:15
---------------	-----------	-------------

Prerequisite: Instructor's consent

INTERMEDIATE LYRICAL

INSTRUCTOR:

Resa-Marie Davenport	Saturday	12:00 - 1:00
----------------------	----------	--------------

Prerequisite: Instructor's consent

ADVANCED LYRICAL

INSTRUCTOR:

Maddy Thiessen	Saturday	12:00 - 1:00
----------------	----------	--------------

Prerequisite: Instructor's consent

STAGE DANCE DIVISION

The following courses are offered as combination Tap and Jazz classes covering the fundamentals of Tap and Jazz technique.

STAGE DANCE I

AGE: 1st & 2nd Grade or 6 or 7 by September 1

INSTRUCTORS:

Staff	Tuesday	6:45 - 7:45
Stephanie Boyle	Thursday	6:45 - 7:45
Julie Sharp	Friday	6:45 - 7:45

STAGE DANCE II

AGE: 3rd Grade & Above

INSTRUCTORS:

Makayla Evans	Monday	5:45 - 6:45
Staff	Wednesday	6:45 - 7:45
Julie Sharp	Friday	6:45 - 7:45

STAGE DANCE III

INSTRUCTORS:

Staff	Wednesday	6:45 - 7:45
Julie Sharp	Friday	5:30 - 6:45

Prerequisite: Instructor's consent

STAGE DANCE IV

INSTRUCTORS:

Gabrielle Wiens	Tuesday	7:00 - 8:00
Julie Sharp	Friday	5:30 - 6:45

Prerequisite: Instructor's consent

(Placement for all students in Intermediate and Advanced level Tap & Jazz classes will be placed by advancement or audition only.)

INTERMEDIATE I STAGE DANCE

INSTRUCTOR:

Gabrielle Wiens	Tuesday	7:00 - 8:00
-----------------	---------	-------------

INTERMEDIATE I/II TAP & JAZZ

INSTRUCTOR:

Mariah Ross	Thursday	5:45 - 6:45
-------------	----------	-------------

INTERMEDIATE III/IV TAP & JAZZ

INSTRUCTOR:

Mariah Ross	Thursday	6:45 - 8:00
-------------	----------	-------------

ADVANCED JAZZ

INSTRUCTOR:

Blair Hanning	Wednesday	5:00 - 6:00
---------------	-----------	-------------

ADVANCED TAP

INSTRUCTOR:

Mariah Ross	Wednesday	6:00 - 7:00
-------------	-----------	-------------

MODERN DIVISION

The following course is an introduction to Modern Dance emphasizing technique as well as creative expression. *Modern Dance is a multi-cultural, natural form of dance. Dancers will go barefoot.*

CREATIVE MOVEMENT

AGE: 8 & up

INSTRUCTOR:

Resa-Marie Davenport	Saturday	10:45 - 11:45
----------------------	----------	---------------

MODERN I/II

INSTRUCTOR:

Maddy Thiessen	Saturday	10:45 - 11:45
----------------	----------	---------------

Prerequisite: Instructor's consent

MODERN III

INSTRUCTOR:

Blair Hanning	Monday	6:45 - 8:00
---------------	--------	-------------

Prerequisite: Instructor's consent

MODERN IV/ADVANCED

INSTRUCTOR:

Blair Hanning	Monday	5:30 - 6:45
---------------	--------	-------------

Prerequisite: Instructor's consent

REPERTOIRE

These classes are open to any students enrolled in Intermediate II Ballet and above. Students must be enrolled in three or more Intermediate II level classes in addition to the Repertoire class. This is a performing class that will be called upon to participate in community events throughout the year. During the winter semester, Repertoire will audition for featured roles in ***THE LITTLE MERMAID*** and also for featured roles in ***FINDING NEVERLAND***.

REPERTOIRE COMPANY

Intermediate II Ballet & above

INSTRUCTORS:

Kris Anderson & Staff	Saturday	1:15 - 3:15
-----------------------	----------	-------------

Prerequisite: Repertoire students are required to enroll in the Saturday ballet classes for their level and are called for the entire rehearsal time.

Dance

SPECIALTY DIVISION

MUSIC THEATRE TAP (For Kids & Adults)

A beginner/intermediate level tap class, this course will cover foundational tap technique, time steps, and choreography.

AGE: 9 & up (including adults)

INSTRUCTOR:

Julie Sharp Saturday 1:00 –2:00

MEN IN MOTION

A Combination of all disciplines of dance.

INSTRUCTOR:

Julie Sharp Saturday 12:00 - 1:00

EL DORADO DIVISION

DANCE RECITAL

El Dorado High School Saturday, May 6 2:00

PRE-BALLET/TAP I/II

AGE: 3 & 4

INSTRUCTOR:

Kaylee Donohue Tuesday 4:45 - 5:30
(All students must be 3 by September 1 & must be potty trained.)

KINDERDANCE I

AGE: 4 & 5

INSTRUCTOR:

Kaylee Donohue Tuesday 5:30 - 6:15

KINDERDANCE II

AGE: 5 & 6

INSTRUCTOR:

Grace Wiens Thursday 3:45 - 4:30

PRIMARY

AGE: 7 - 10

INSTRUCTOR:

Gabrielle Wiens Wednesday 4:00 - 4:45

BALLET I

INSTRUCTOR:

Gabrielle Wiens Wednesday 5:30 - 6:15

Prerequisite: Instructor's consent

BALLET II/III

INSTRUCTOR:

Grace Wiens Thursday 4:30 - 5:30

Prerequisite: Instructor's consent

INTERMEDIATE BALLET

AGE: 11 & up

INSTRUCTOR:

Mariah Ross Tuesday 7:15 - 8:15

PRE-POINTE & BEGINNING POINTE

AGE: 11 & up

INSTRUCTOR:

Mariah Ross Thursday 8:15 - 8:45

Prerequisite: Instructor's consent

STAGE DANCE I

AGE: 7 - 10

INSTRUCTOR:

Gabrielle Wiens Wednesday 4:45 - 5:30

STAGE DANCE II

INSTRUCTOR:

Gabrielle Wiens Wednesday 6:15 - 7:00

Prerequisite: Instructor's consent

STAGE DANCE III/IV

INSTRUCTOR:

Grace Wiens Thursday 5:30 - 6:30

Prerequisite: Instructor's consent

INTERMEDIATE STAGE DANCE

AGE: 11 & up

INSTRUCTOR:

Mariah Ross Tuesday 6:15 - 7:15

MODERN

AGE: 11 & Up

INSTRUCTOR:

Gabrielle Wiens Wednesday 7:00 - 8:00

CANCELLATION POLICY:

You may withdraw from any or all classes at any time by giving written notice to the office no later than the 15th of the month. If written notice is not received by the 15th, you are obligated to pay that month's tuition payment and will be billed accordingly.

TUITION FOR DANCE CLASSES

Tuition paid monthly

1 class per week	\$45 per month
2 classes per week	\$80 per month
3 classes per week	\$105 per month
4 classes per week	\$125 per month
5 classes per week	\$145 per month
6 classes per week	\$165 per month
7+ classes per week	\$185 per month
Dance/Theatre Combo	\$75 per month
El Dorado Pointe	\$20 per month

Individual Classes will be \$12.00 per class and must be paid prior to dancing. A 10% discount will apply for full semester **dance** tuition (must be paid with September and/or January payments)

DRESS CODE FOR DANCE CLASSES:

Girls - Pink leotard, pink tights, pink ballet slippers, and black tap shoes.

Boys - White T-shirt, black tights, black jazz pants or black shorts, black ballet slippers, and black tap shoes.

PRIMARY BALLET

Girls - Pale blue leotard, pink tights, and pink leather or canvas ballet slippers. (No skirts please.)

Boys - White T-shirt, black tights, and black ballet slippers.

BALLET I thru ADVANCED BALLET

Girls - Black leotard, pink tights, and pink ballet slippers. (Skirts are allowed in pointe class only.)

Young men - White T-shirt, black tights, may wear black shorts, and black ballet slippers.

TAP CLASSES - Any color leotard and tights, may wear black jazz pants, and black tap shoes.

JAZZ & LYRICAL CLASSES - Any color leotard and tights, may wear black jazz pants, and black jazz shoes. **All Intermediate I Jazz and above must have tan jazz shoes.**

STAGE DANCE CLASSES - Any color leotard, and tights, may wear black jazz pants, black tap shoes, and black jazz shoes.

MODERN CLASSES - Any color leotard and tights, will go barefoot.

ADULT TAP - Loose comfortable clothing and tap shoes.

SEASON PUNCHCARD

In order to provide flexible scheduling and savings to our patrons, WCT&DC offers a Family Punchcard, which may be used for Mainstage, Once Upon a Time, Dance, and Picnic Theatre Shows. This card also gives a 10% discount on classes and birthday parties. To insure seats for a specific performance, call for advance reservations.

You may order your Punchcard now by using the order form below, or you may purchase them any time throughout the season.

Family Punchcard.....\$60.00
(You receive 10 admissions. This is a savings of \$10.00.)

Single ticket prices are \$7.00 without Punchcard.

ORDER FORM

Please send ____ Family Punchcards @ \$60.00

Complete the following:

Name _____

Phone _____

Address _____

City _____ State ____ Zip _____

E-mail _____

My check for \$ _____ is enclosed

Pay by Visa or MasterCard

Name on card _____

Card # _____

Expiration date _____

3 digit # on back of credit card _____

I have included \$ _____ as a contribution to WCT&DC

Mail this form, payment, and self-addressed stamped envelope to:

Wichita Children's Theatre & Dance Center
201 Lulu
Wichita, KS 67211-1712

If you have questions, call **262-2282**
Or email us at wctdc@att.net

REGISTRATION

Registration forms for classes should be sent to the following address:

Wichita Children's Theatre & Dance Center
201 Lulu
Wichita, KS 67211-1712

Or you may register on line at www.wctdc.com
Please indicate the method of payment at the bottom of the form.

NAME (ADULTS/PARENTS) _____

HOME PHONE _____

BUSINESS/CELL PHONE _____

ADDRESS (PLEASE INCLUDE ZIP CODE) _____

E-MAIL ADDRESS _____

REGISTRATION FORM

1. _____
NAME (CHILD)

AGE _____ DATE OF BIRTH _____ MALE FEMALE

CLASS TITLE

DAY/TIME

CLASS TITLE	DAY/TIME

2. _____
NAME (CHILD)

AGE _____ DATE OF BIRTH _____ MALE FEMALE

CLASS TITLE

DAY/TIME

CLASS TITLE	DAY/TIME

METHOD OF PAYMENT:

(We accept Visa & MasterCard)

Check enclosed for total

Pay by Visa or MasterCard

Name on card _____

Card # _____

Expiration date _____

3 digit # on back of credit card _____

I will pay on first day of class

Please apply 10% discount for season subscribers.

Please apply 10% discount for full semester **dance** tuition (must be paid with September and/or January payments)

I have included \$ _____ as a contribution to WCT&DC

Only one of the above discounts applies.

If you have questions, call **262-2282**



Wichita
Children's Theatre
& Dance Center
A Non-Profit Organization

Wichita Children's Theatre Inc.
201 Lulu, Wichita, KS 67211-1712

2016-2017